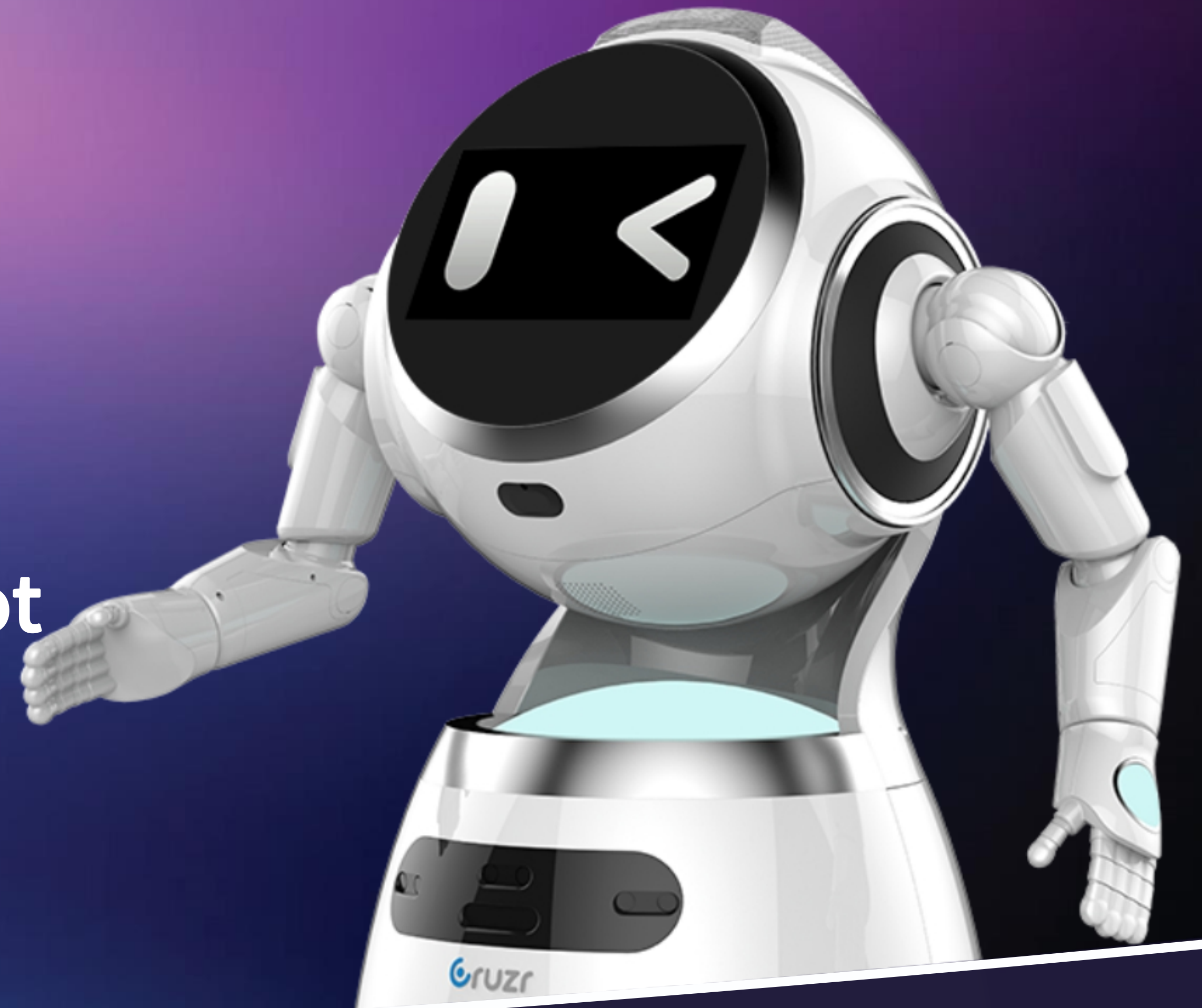


CrUZr

Intelligent Cloud-based
Business Service Robot





Cruzr

**Customized, Cloud-based,
Intelligent Humanoid Service Robot**
New Era for intelligent robotic service

- **Cloud-based Robotic OS**
- **Open API**
- **Customized Service**
- **One-stop Solution**

- ✓ Dealing with repetitive tasks
- ✓ Reducing operating cost
- ✓ Increasing working efficiency
- ✓ Improving quality of service
- ✓ Improving customer satisfaction
- ✓ Improving cooperate brand image

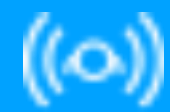
Key Features



Friendly Human-like Design



Multimodal Interaction



Real-time Stereo-Navigation



Automatic Recharge



Accurate Face Recognition



HD Video Conference



Electronic Skin



Data Collection Analysis



Simple Centralized Control

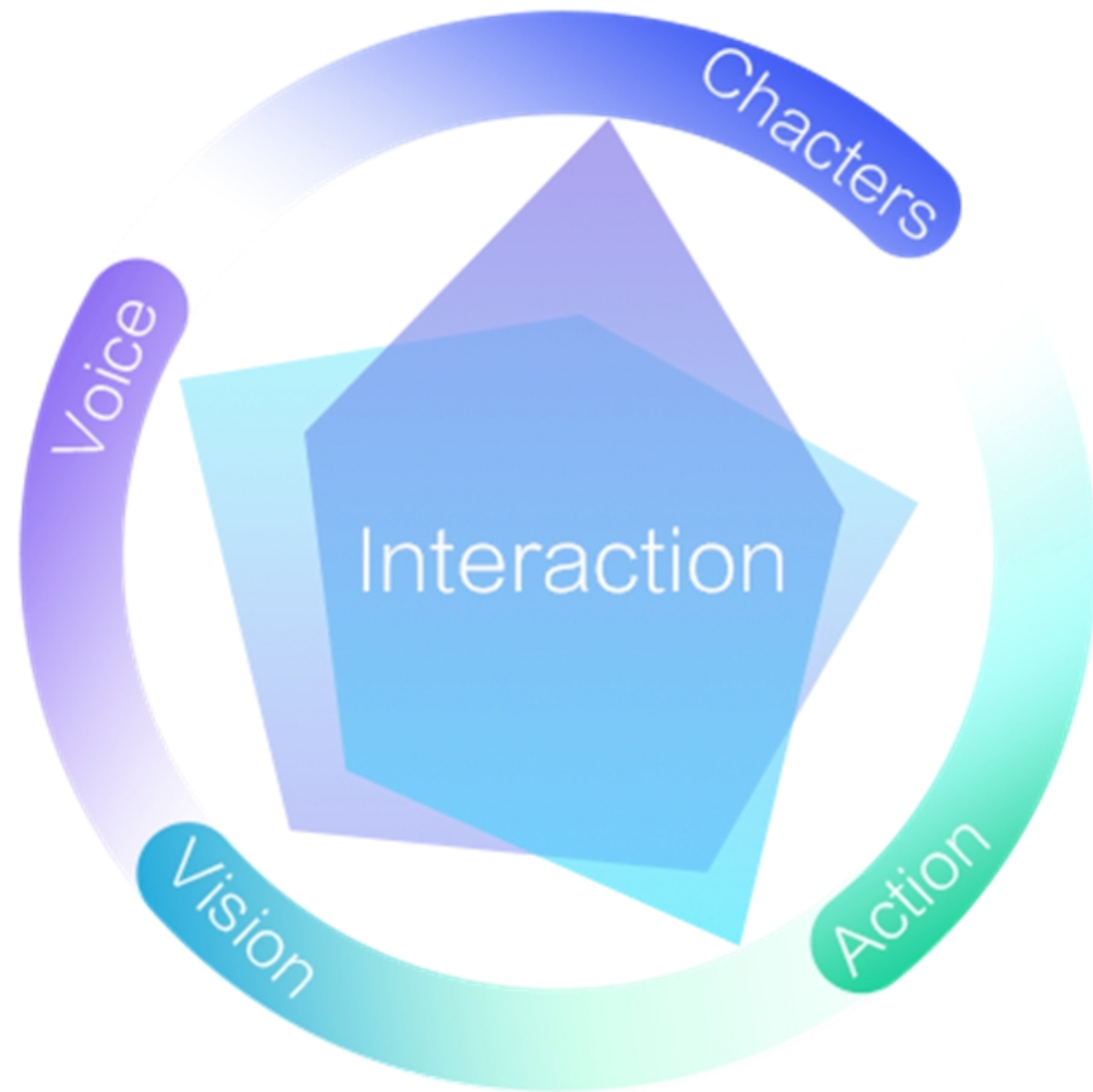


Friendly Human-like Design

- Humanoid Robot
 - 15 Degrees of Freedom (DoFs) in total
 - 12 DoFs on shoulders and arms
 - 360° abrasion resistant and quiet wheels
-
- ✓ More Affinity
 - ✓ More Friendly Trustable
 - ✓ Rich Body Language
 - ✓ Smooth and Stable Movement



Multi-modal Interaction



“Modality” means “sense” , Multi-modal interaction is an interaction with voice, action, text, expression and other modes of communication to fully simulate human communication.

- More expressive
- More humanlike
- More vivid

U-SLAM Navigation System

U-SLAM is short for UBTECH SLAM (simultaneous localization and mapping), which uses real-time positioning and mapping technology to navigate and avoid obstacles.

- Real-time positioning and mapping
- 6 kinds of major sensors that are distributed in a 360° annular sensory array
- ✓ Self-adapt to different environments
- ✓ Arrive at any location with precision



Automatic Recharging

- Auto return to recharging dock based on infrared sensor
 - 8 hrs working time (24 hrs standby)
 - Covert conductive wheeling charging technology
-
- ✓ Stable and accurate auto charging with low power consuming
 - ✓ Multiple charging methods: Directive recharging, Pre-set recharging, Automatic recharging



Facial Recognition

- Suitable for customer reception or profile creation
- The recognition accuracy is up to 98%
- Improve customer experience via knowing by a robot

Faster Face Recognition

More accurate Face Recognition



U-Meeting Video Call System

U-Meeting is a business application that provides HD voice and video call functions, through high-definition audio and video codec and smooth transmission.

- Video-based Customer Service
- High-definition Audio and Video Codec
- Secured Video Data Transmission

Clearer Faster Safer

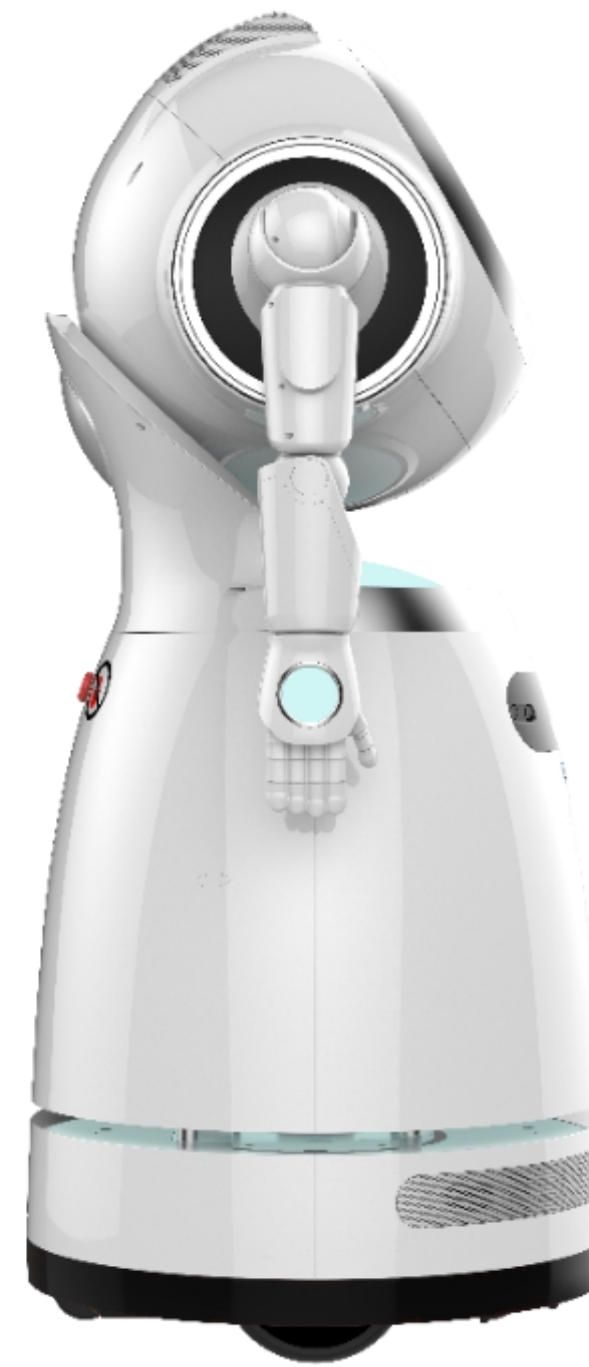


Enhanced Safe-Assurance with E-skin

Auto power off protection on arms

- High Sensitivity
- Fast Response
- Soft
- Large Detecting Area

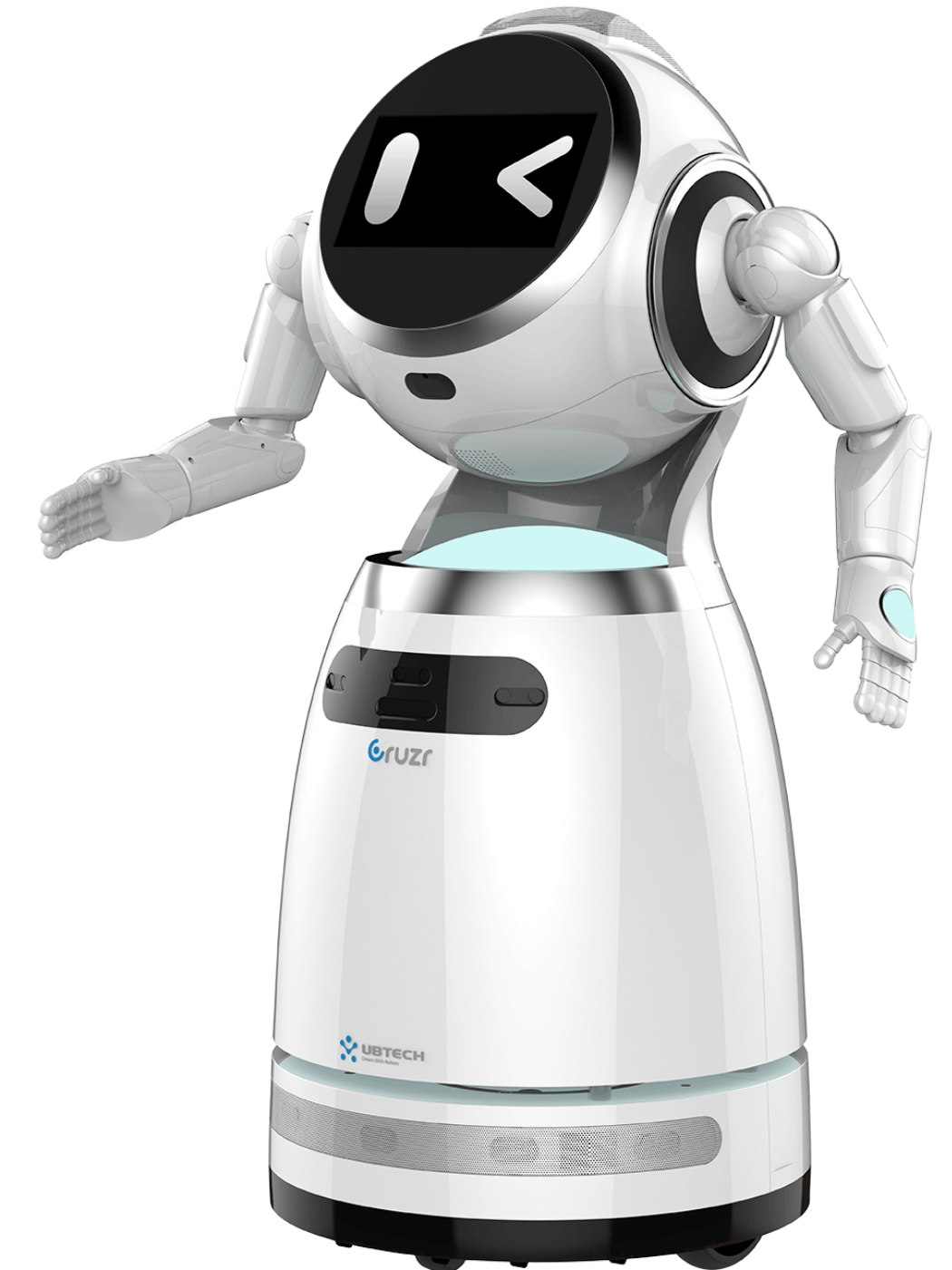
When any obstacles detected, the arms will stop moving which could avoiding unexpected harm to people around and self-damaging.



High Sensitivity



Fast Response



Dual Protection

Big Data Analysis and Management

- Discover effective information to obtain better business value
- Data acquisition, storage and analysis
 - ✓ High-efficient data acquisition
 - ✓ Secured data storage
 - ✓ Intelligent data analysis



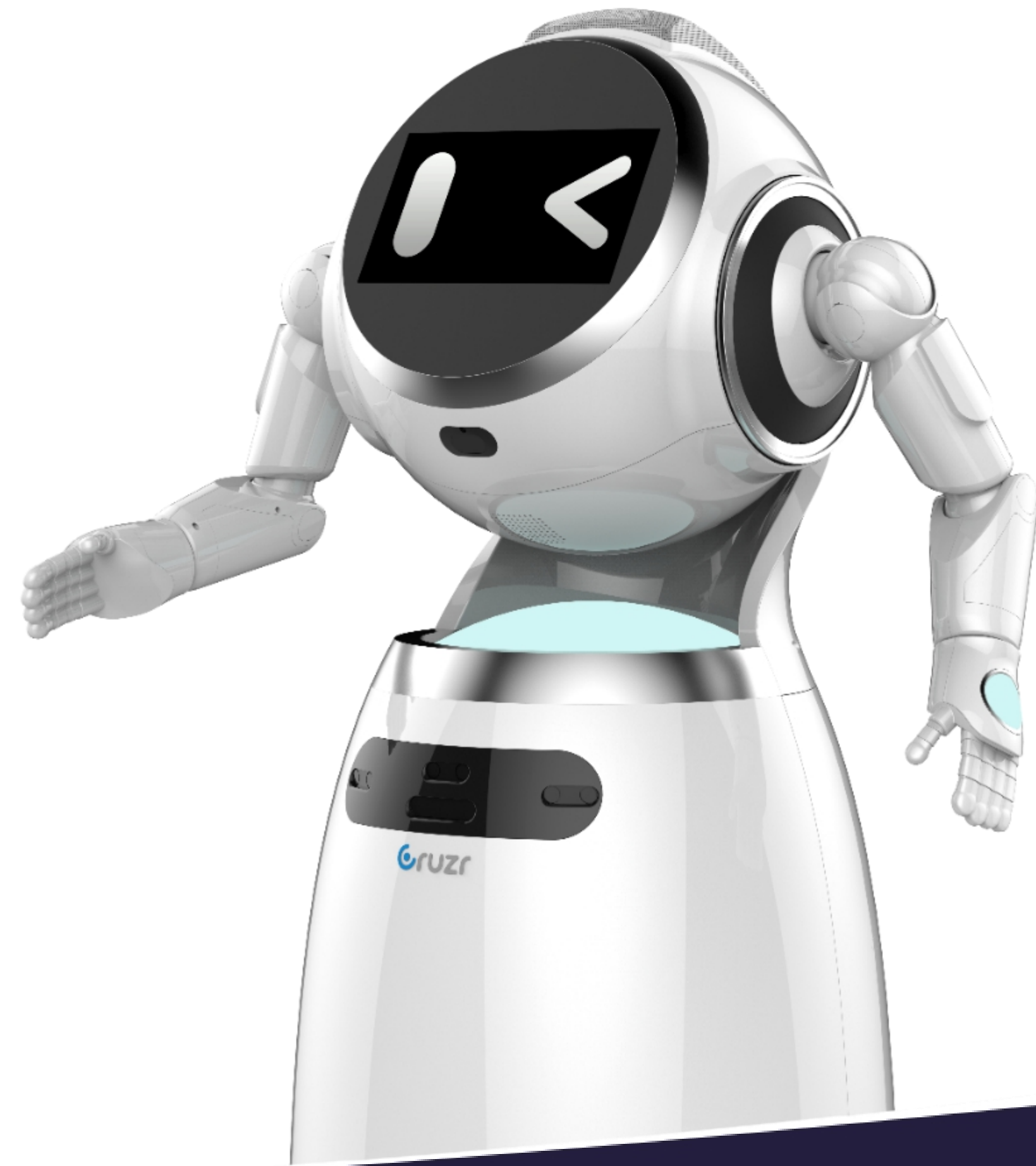
Centralized Control System

- Centralized Control System
 - Multiple Robots Patrolling Control
 - Multiple Robots Remote Advertising
-
- ✓ Convenient Multi-robots Control
 - ✓ Advanced Intelligent Way Patrolling
 - ✓ Convenient Advertisement Pushing



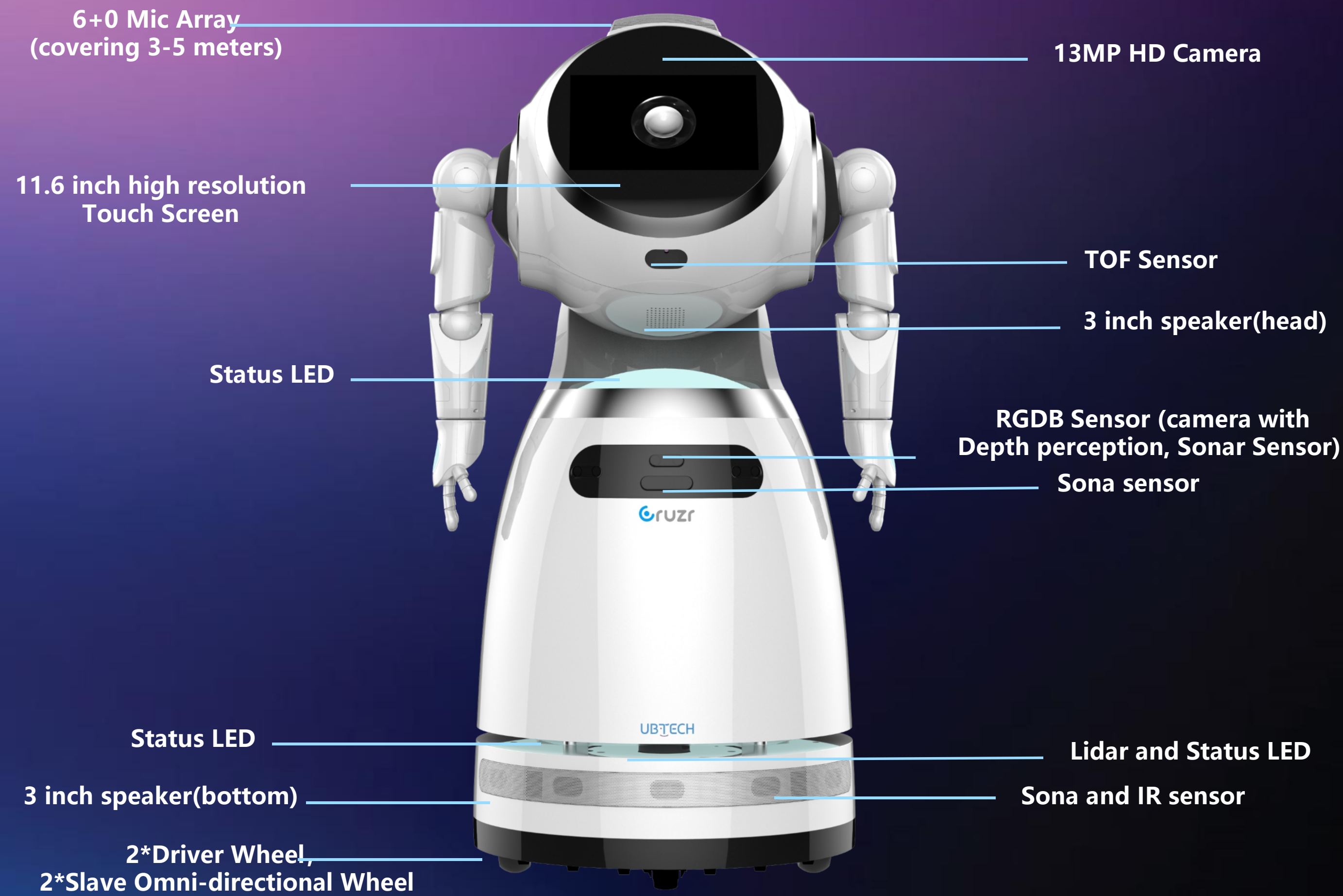
Customizable Service with open APIs

- SDK Package
 - Open APIs for third party application development
 - One-stop solution integration
-
- ✓ Customizable application
 - ✓ Expandable solution



Product Parameters

- Dimension: 1214(H)*630(W)*537(D) (mm)
- Screen: 11.6inch TFT HD Touch Screen
- Maximum Height of Obstacle to Pass: 2CM
- Maximum Climbing Angle : 6°
- Speed: 0.3/0.5/0.7M/S (Max is 1M/S)
- Laser Radar: 360°
- Weight: 45kg
- Resolution: 1920*1080
- Maximum width of gap to pass: 3CM
- Communication: Wi-Fi(2.4G/5G), 4G Module
- E-Skin: 3*2 (Two Arms, 3pic/one Arm)
- Speaker: 85dB
- Navigation sensor:
 - RGDB Sensor*1, Close Sona Sensor *3, Open Sona Sensor*5,
 - IR sensor *6, Lidar Sensor*1, Recharger Infrared *2, TOF Sensor*1





Application Scenarios



Garage



Medical
Treatment



Traffic



Party
Building



Retail



Government
Affairs



Exhibition



Finance



Education



Hotel



Company Name: **UBTECH Robotics Co., Ltd**

Company Address: **8th, 22th Floors, Block C1, Nanshan IT Park, No. 1001 Xueyuan Road, Nanshan District, Shenzhen City, China**Official

Website: **www.ubtrobot.com**

Email: **commercial.marketing@ubtrobot.com**Service

Line: **400-6666-700**

Trademark statement

UBTECH COMMERCIAL and other trademarks, product names, service names and company names appearing in this brochure and in the products described in this brochure are the property of their respective owners.

Disclaimers

*All contents such as graphics, videos, and photographed products are for reference only, and actual products may change or differ.

*Please refer to the final contract or purchase, our company reserves the right to interpret within the scope permitted by law.

Copyright

No part or all of the contents of this document may be excerpted or reproduced by any entity or individual without the written consent of UBTECH, and may not be transmitted in any form.

Thanks